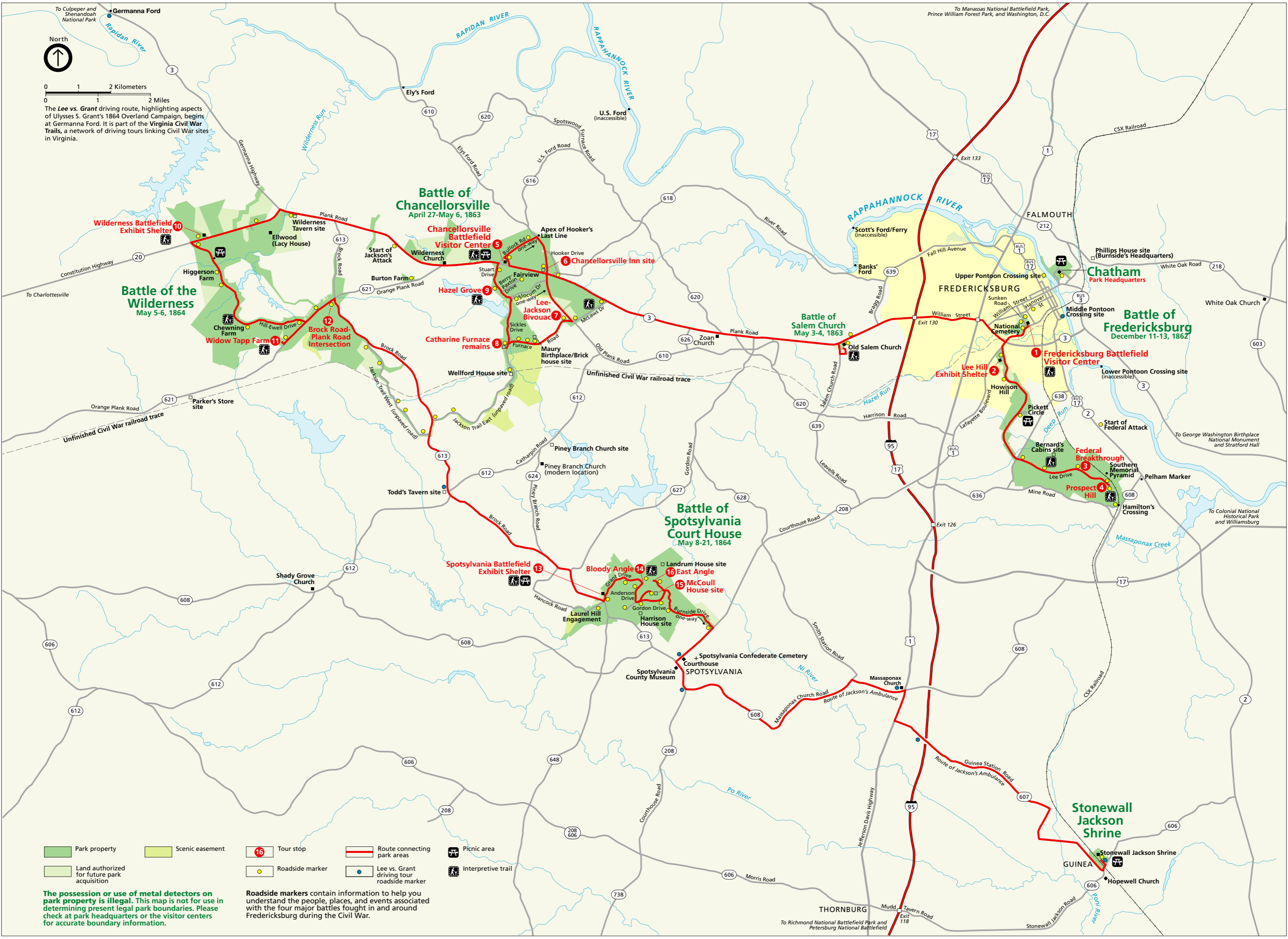


The Lee vs. Grant driving route, highlighting aspects of Ulysses S. Grant's 1864 Overland Campaign, begins at Germanna Ford. It is part of the Virginia Civil War Trails, a network of driving tours linking Civil War sites in Virginia.

- | | | | | | | | |
|--|---|--|-----------------|--|--|--|--------------------|
| | Park property | | Tour stop | | Route connecting park areas | | Picnic area |
| | Land authorized for future park acquisition | | Roadside marker | | Lee vs. Grant driving tour roadside marker | | Interpretive trail |
| | Scenic easement | | | | | | |

The possession or use of metal detectors on park property is illegal. This map is not for use in determining present legal park boundaries. Please check at park headquarters or the visitor centers for accurate boundary information.

Roadside markers contain information to help you understand the people, places, and events associated with the four major battles fought in and around Fredericksburg during the Civil War.



To Richmond National Battlefield Park and Petersburg National Battlefield

To Manassas National Battlefield Park, Prince William Forest Park, and Washington, D.C.

To Colonial National Historical Park and Williamsburg

To George Washington Birthplace National Monument and Stratford Hall